

BOCA RATON GOLF COURSE PUD

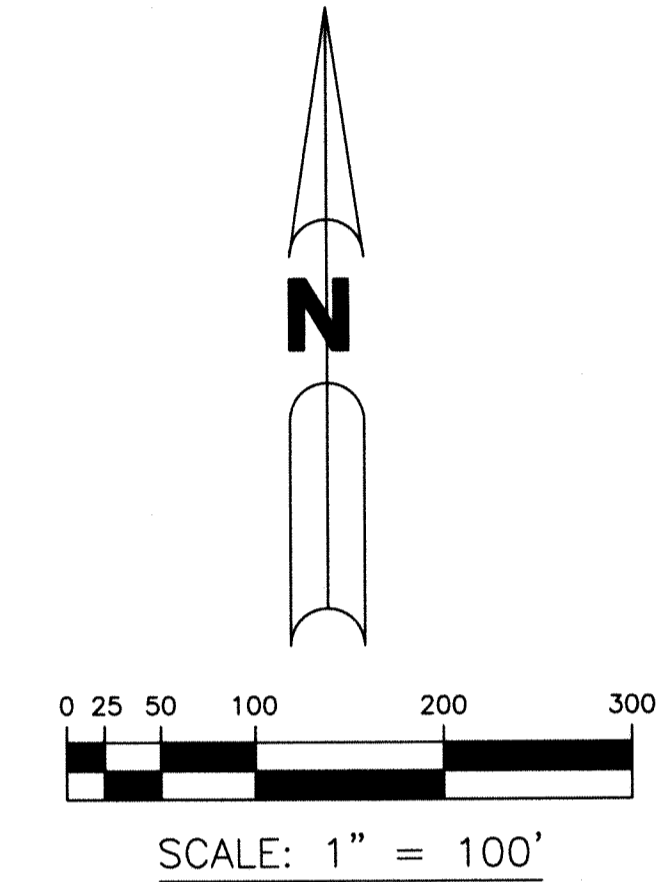
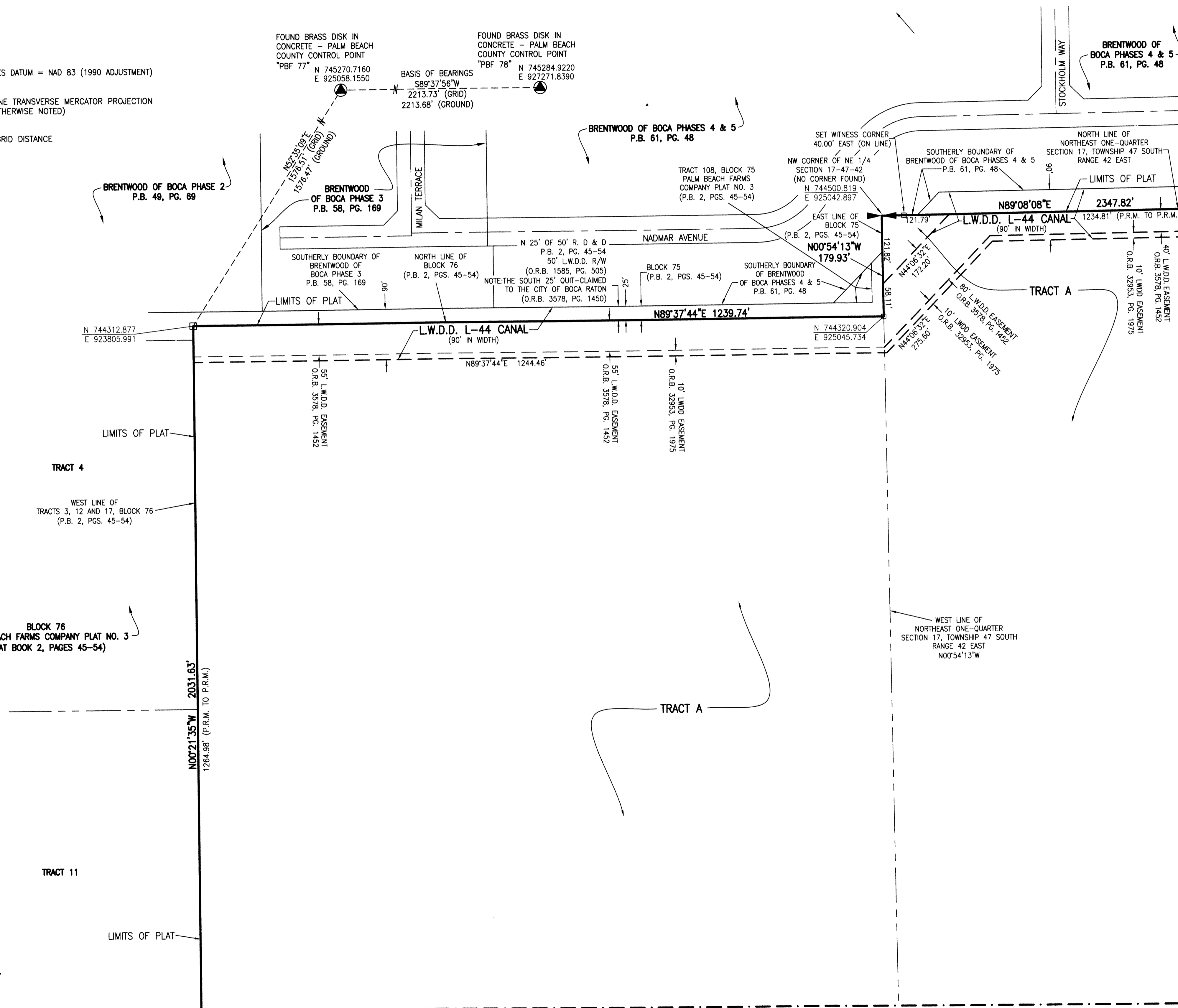
BEING A REPLAT OF ALL OF TRACTS 1 THROUGH 3, INCLUSIVE, TRACTS 12 THROUGH 17, INCLUSIVE, A PORTION OF TRACTS 29 THROUGH 35, INCLUSIVE, AND A PORTION OF ROAD, DYKE AND DITCH RESERVATIONS, ALL IN BLOCK 76, PALM BEACH FARMS CO. PLAT NO. 3, ACCORDING TO THE PLAT THEREOF, AS RECORDED IN PLAT BOOK 2, PAGES 45 THROUGH 54, PUBLIC RECORDS OF PALM BEACH COUNTY, FLORIDA AND A PORTION OF THE NORTHEAST ONE-QUARTER OF SECTION 17, TOWNSHIP 47 SOUTH, RANGE 42 EAST, PALM BEACH COUNTY, FLORIDA, ALL LYING WITHIN SECTION 17, TOWNSHIP 47 SOUTH, RANGE 42 EAST.

SHEET 3 OF 6

25

NOTES:

COORDINATES SHOWN ARE GRID COORDINATES DATUM = NAD 83 (1990 ADJUSTMENT)
 ZONE = FLORIDA EAST ZONE
 LINEAR UNIT = U.S. SURVEY FEET
 COORDINATE SYSTEM = 1983 STATE PLANE TRANSVERSE MERCATOR PROJECTION
 ALL DISTANCES ARE GROUND (UNLESS OTHERWISE NOTED)
 SCALE FACTOR = 1.00002408
 PLAT BEARING = GRID BEARING
 GROUND DISTANCE X SCALE FACTOR = GRID DISTANCE

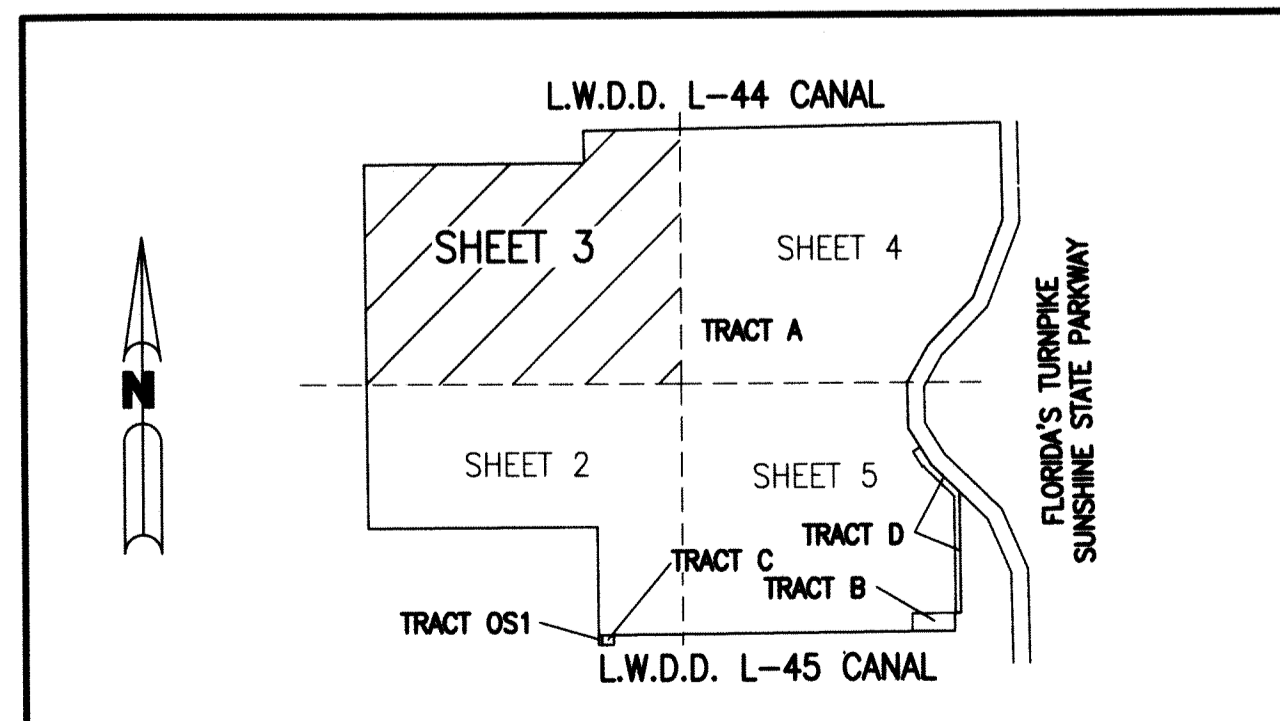


- LEGEND:**
- - SET PERMANENT REFERENCE MONUMENT 4"x4" CONCRETE MONUMENT WITH 1.5" DISK STAMPED L.B. #7741
 - - FOUND PERMANENT CONTROL POINT 4"x4" CONCRETE MONUMENT WITH 1.5" DISK STAMPED L.B. #7741
 - - SET PERMANENT REFERENCE MONUMENT 1.5" DISK WITH NAIL STAMPED L.B. #7741
 - ⊕ - CENTERLINE
 - D.B. - DEED BOOK
 - F.P.L. - FLORIDA POWER & LIGHT LICENSED BUSINESS
 - L.W.D.D. - LAKE WORTH DRAINAGE DISTRICT
 - N.T.S. - NOT TO SCALE
 - O.R.B. - OFFICIAL RECORD BOOK
 - P.B. - PLAT BOOK
 - PBCUE - PALM BEACH COUNTY UTILITY EASEMENT
 - PBF76 - BLOCK 76 PALM BEACH FARMS CO. PLAT NO. 3, P.B. 2, PGS. 45-54
 - PG. - PAGE
 - P.O.B. - POINT OF BEGINNING
 - P.O.C. - POINT OF COMMENCEMENT
 - P.S.M. - PROFESSIONAL SURVEYOR AND MAPPER
 - PUD - PLANNED UNIT DEVELOPMENT
 - P.U.D. - PLANNED UNIT DEVELOPMENT
 - R.D.&D. - ROAD, DYKE & DITCH RESERVATION
 - R/W - RIGHT-OF-WAY
 - S.T. - SURVEY TIE
 - U.E. - UTILITY EASEMENT

MATCH LINE "B" - SEE SHEET 4 OF 6

THIS INSTRUMENT PREPARED BY
 PERRY C. WHITE, P.S.M. 4213,
 STATE OF FLORIDA
 SAND & HILLS SURVEYING, INC.
 8461 LAKE WORTH ROAD, SUITE 410
 LAKE WORTH, FLORIDA
 33467 LB-7741

MATCH LINE "A" - SEE SHEET 2 OF 6



KEY MAP
 N.T.S.